

FIRST AID STATION

Each team is asked to bring/supply their own first aid kit including tape and band aids.

The First Aid Station (**red tent**) is intended for low level emergencies only. Ice is available for any sprains, twists, or jammed fingers. Two AEDs are available on site (lower floor and 2nd floor concourse). In the event of a high-level emergency, tournament volunteers or coaches will contact 911.

TEAM SPECIALS

Kinsmen Aquatic Center – waterslide, hot tub, and swimming pool

- Reserved on December 1, 7pm-9pm for team use.

Fort Dauphin Museum – examines life in the Parkland from 8000 years ago, early explorers, fur traders, the Métis people and early settlers.

- The museum is open from 10am-3pm on Thursday and Friday.

McDonald's Coupons – consider supporting this tournament sponsor!

- Included in this package are coupons for free products at Dauphin McDonald's.

AWARDS

Player's Choice Awards

Please see form in envelope.

Captains are to choose one player from your team and 4 other players that meet the criteria outlined on the form.

Please return forms **in envelope provided** to Mr. Taylor Schmidt (convenor) **before** the semi-final games begin.

The Player's Choice recipients will receive a plaque commemorating their achievement.

This award is sponsored by the Dairy Farmers of Manitoba.

Player of the Game (POG)

One Player of the Game (POG) award will be chosen for each team per match; however, these will be selected by the coach of the opposing team.

POG forms are located in the envelope in your coach package.

Please fill out the player's name, number, and the team for which they play. Submit this paper to the scorekeeper at the end of the game so POGs can be announced at that time. You may want to ask which players have already received this award, prior to the game, so that one player isn't nominated every time.

At the end of each game, both teams will line up on the attack line and the winners will be announced for both teams. POGs will receive a certificate and a small prize.

Scan this code to access the MHSAA provincial volleyball website.



All Star Athletes

There will **not** be POGs chosen for the 3rd place or championship matches as they will be replaced by the provincial all-star selections.

Provincial All-Star Athletes will be chosen by a selection committee who will be observing play throughout the tournament. All-Star Athletes will be announced at the Championship and 3rd place matches.

Coach's Package

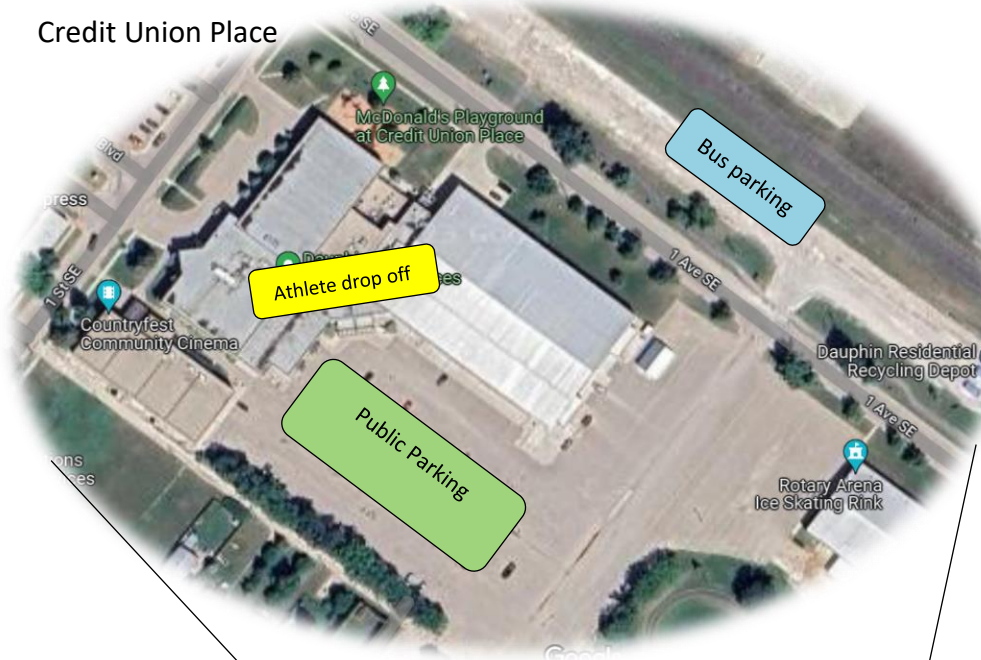


2023 MHSAA AAA PROVINCIAL CHAMPIONSHIPS
VOLLEYBALL
DAUPHIN, MB

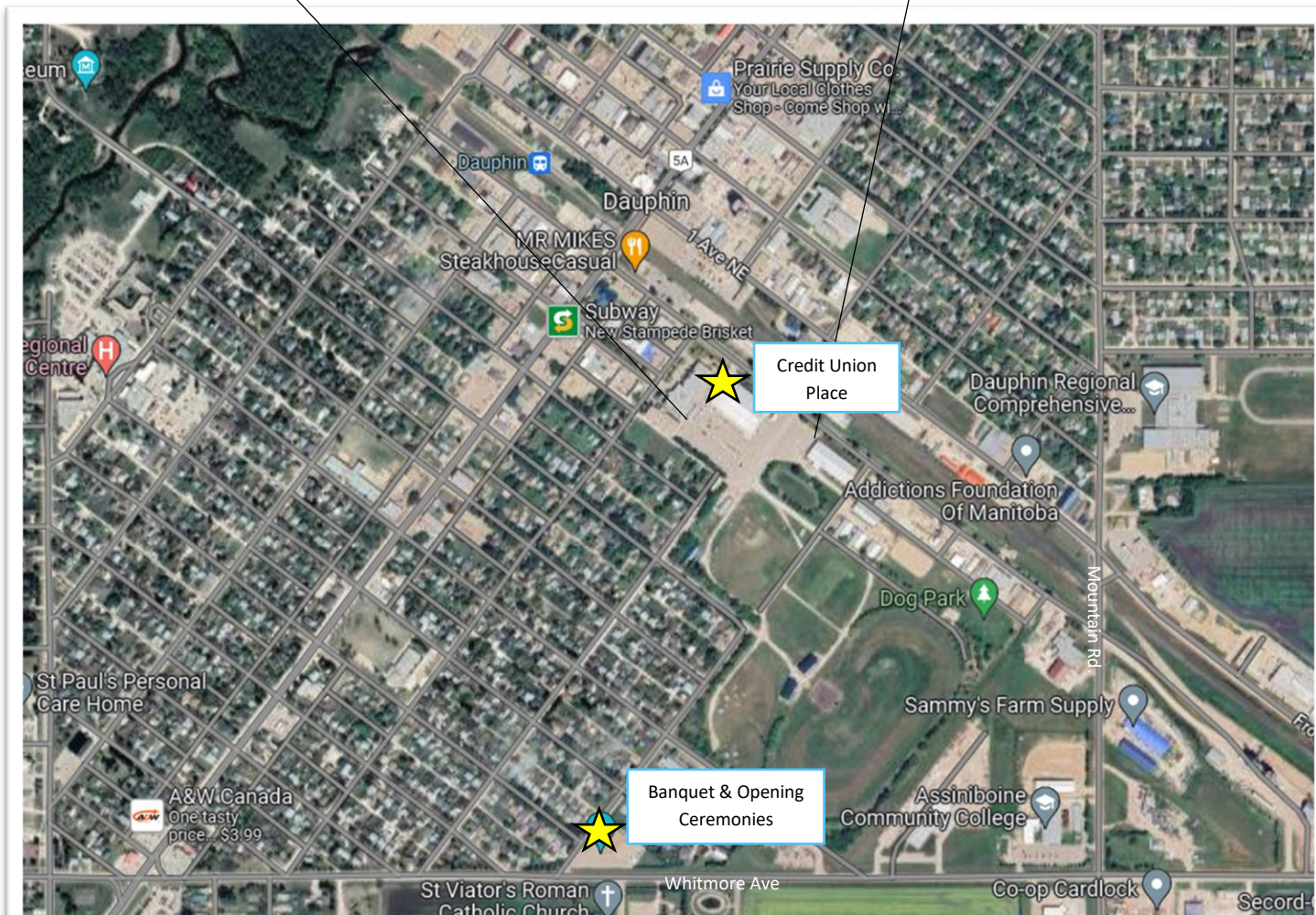
November 30 - December 2, 2023

WHERE TO GO:

Credit Union Place



- All games will be played at Credit Union Place ("the CUP"). Please see the insert for courts, change rooms, etc. Signage will be on display as well.
- Players should **NOT** leave any valuables in changerooms. Banquet will be held at Ukrainian Orthodox Auditorium (304 Whitmore Ave East) on Nov 30 @ 7pm.
- Temptations Concession will be open and available throughout the tournament on the 2nd floor of the CUP.
- First Aid Station (red tent) and AEDs available on site.



****ATHLETES, COACHES, AND DRIVERS ARE REMINDED TO WEAR ACCESS BADGES AT ALL TIMES ON SITE****

OPENING CEREMONIES & BANQUET

Thursday, November 30, 7:00pm @ Ukrainian Orthodox Auditorium (304 Whitmore Avenue East)

- All players and coaches are asked to attend. Doors open at 6:15pm.
- Dress code is semi formal (no sweatpants!).
- All coaches, players, and drivers must have their identity badges visible for admittance.
- Cash or check for team banquet payment due at Host Tent upon arrival at tournament (\$20 per guest).

NEED IT? WE'VE GOT IT!

Dining

Dine In



- Boston Pizza (1450 Main St. S)
- Pizza Hut (1575 Main St. S)
- Corinna's (28-B Memorial Blvd)
- Mr. Mike's (10 Main St. S)
- Smitty's (1601 Main St. S)

Fast Food

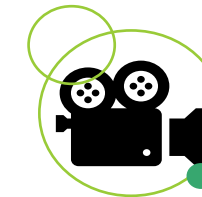
- Temptation's Concession (@ CUP)
- McDonald's (1461 Main St. S)
- Dairy Queen (1450 Main St. S)
- Subway (204 Main St. S)
- Café Trocadero (403 Main St. S)
- A&W (1121 Main St. S)
- Guac (1351 Main St. S)
- Tim Horton's (1565 Main St. S)
- KFC (1122 Main St. S)
- Adelinas (11 2nd Ave NE)

Health



- Dauphin Reg Health Center (625 3rd St S)
- Dauphin Clinic Pharmacy (622 3rd St S)
- Super Thrifty Pharmacy (244 Main St N)
- Wal Mart Pharmacy (1450 Main St. S)
- Dauphin Walk in Clinic (622 3rd St S)

Things to Do (see back page as well)



- Kinsmen Aquatic Center (reserved from 7-9 on Friday night for teams; 200 1st St SE)
- Parkway Lanes (1236 Main St. S)
- CountryFest Community Cinema (210 1st St. SE)
- Squash Courts (@ Super8; 1457 Main St. S)

Maintenance



- Denray Tire (55 Keays St.)
- Canadian Tire Garage (1500 Main St. S)
- Kal-Tire (305 Main St. S)

Equipment or Supplies



- Source for Sports (6 1st Ave. SW)
- Wal Mart (1450 Main St. S)
- Canadian Tire (1500 Main St. S)

HOST(ESS) CONTACTS

Call or text: Colin (204) 572-8381 Lorissa (204) 647-0544 Melanie (204)-572-5422 Dominic (204) 572-5425

PHOTOGRAPHY:

Todd Pederson (from Pederson Photographic) will be onsite throughout the tournament capturing professional photographs of athletes in play. Please stop by his booth on the upper concourse to access and purchase photographs.